

# Aitik

---

Jan Öhman General Manager Aitik



Mines



Smelters



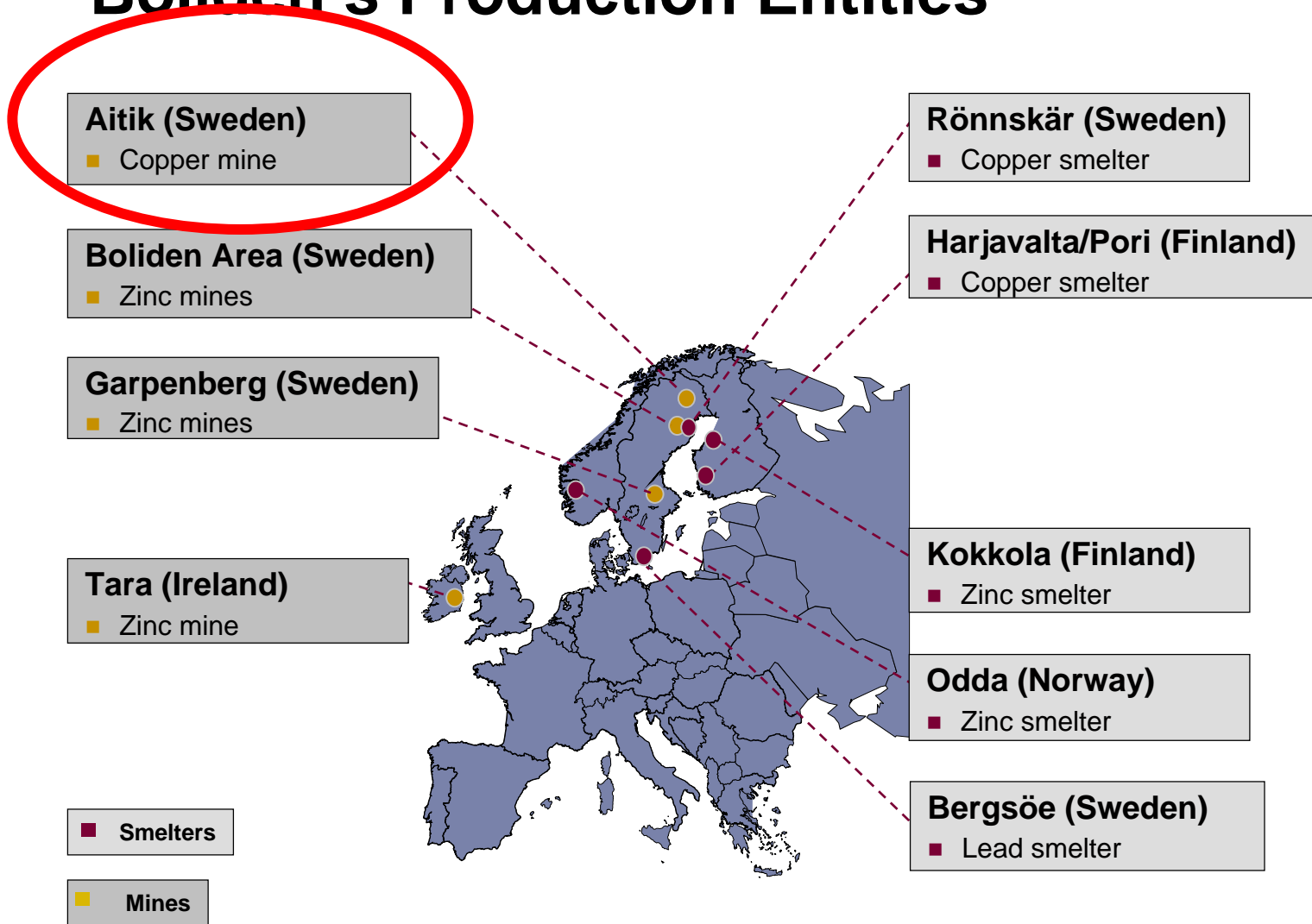
Zinc



Copper

**BOLIDEN**

# Boliden's Production Entities



# Aitik



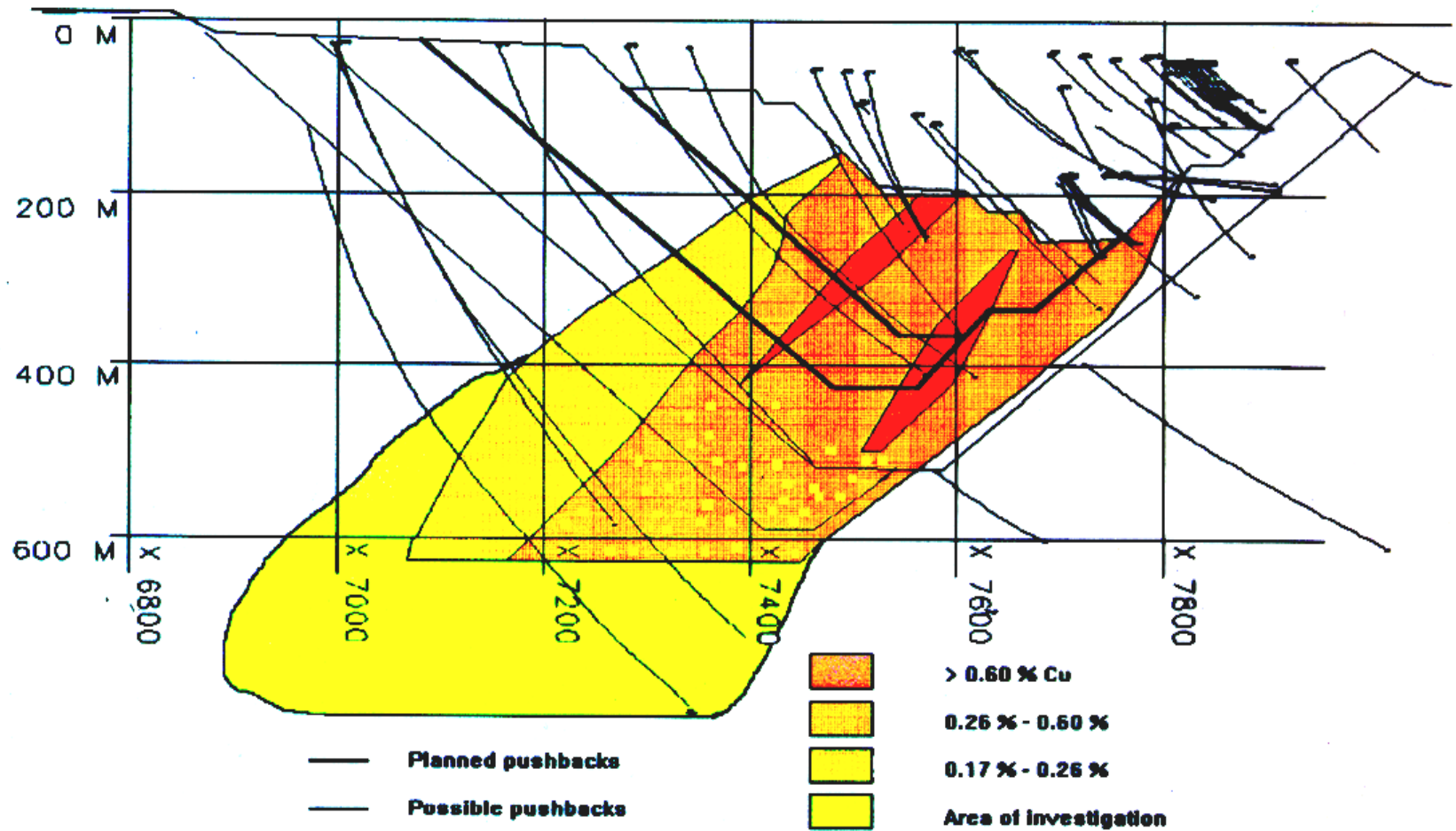
**BOLIDEN**

# History

- 1930** The first boulders with disseminated chalcopyrite were found.
- 1932-33** Localization of mineralized outcrop. EM-survey
- 1948-56** EM-surveys and minor geochemical investigations.
- 1957** New geological investigations. Airborne EM and magnetic survey. Diamond drilling
- 1960-64** Resistivity survey and diamond drilling.
- 1965** Feasibility study
- 1966-68** Development work for a 2 Mt annual production.
- 1969** Decision for mining investigation between 300 and 600 m level
- 1970-72** Capacity expansion for a 6 Mt annual production.
- 1979-81** Capacity expansion for an 11,3 Mt annual production.
- 1989-91** Capacity expansion for a 16 Mt annual production
- 2000** Annual capacity 18 Mt.

# Deposit Cross section

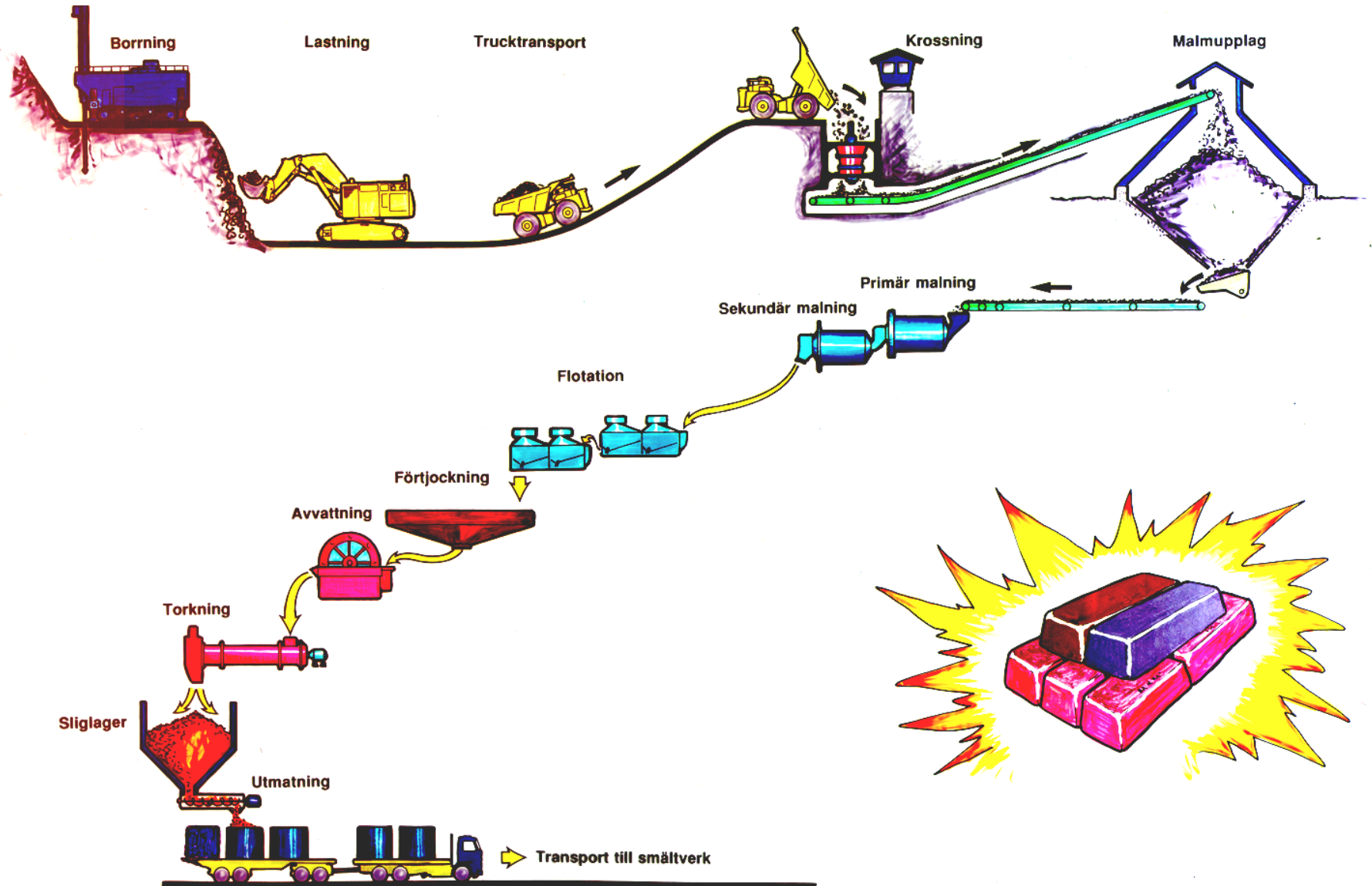
## Profile 4000



# Aitik – Reserves and Resources

	<b>QUANTITIES</b> ktonnes	<b>Au</b> g/t	<b>Ag</b> g/t	<b>Cu</b> %
<b>Reserves</b>				
Proven	220,000	0.2	3	0.33
Probable	12,000	0.2	3	0.39
<b>Resources</b>				
Measured	580,000	0.2	2	0.30
Indicated	230,000	0.2	2	0.28
Inferred	100,000	0.2	2	0.30

# Process view



# Mining equipment

## Drilling

Bucyrus-Eire 49RH 1 ea  
Bucyrus-Eire 49R III1 ea  
Bucyrus-Eire 49R 2 ea

## Shovels

Demag 485 1 ea  
P&H 4100 2 ea  
BE 295 1 ea  
BE 495 1 ea

## Trucks

Caterpillar 789 6 ea  
Caterpillar 793B,C 11 ea  
Unit Rig MT 4000 8 ea

## Miscellaneous

Grader Cat 16 H/G 3 ea  
Dozer Cat D10 N 1 ea  
Frontloader Cat 994 1 ea  
..  
..



# Capacities

## Crushing

Gyratories 6 500 t/h

## Grinding

5 lines, max 2 800 t/h

## Conveyors

Rubber belt 4 000 t/h

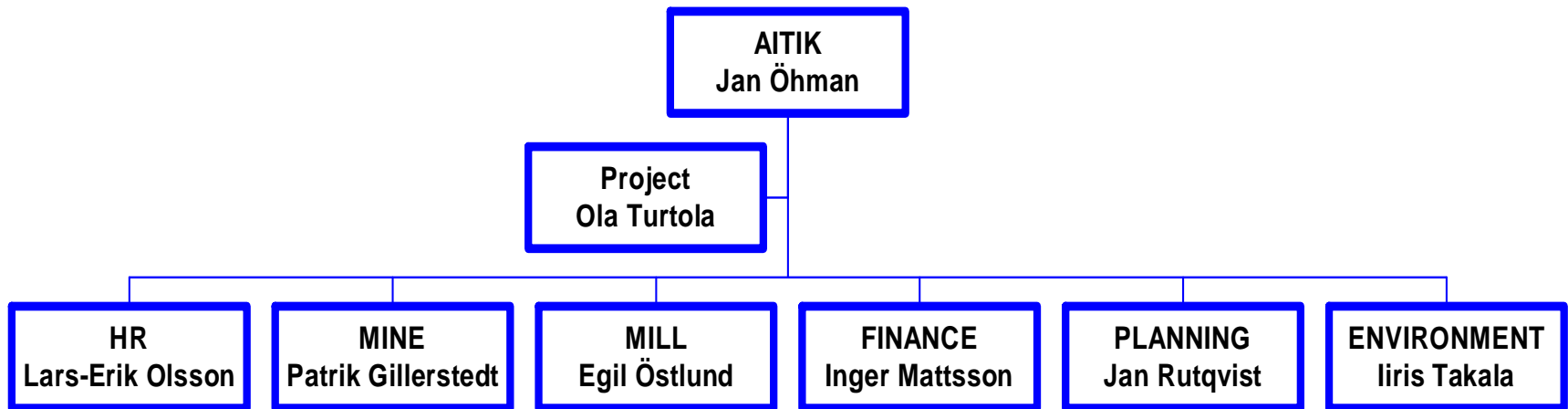
Primary 12,5 \* 6,7 m  
6 000 kW

Secondary 6,8 \* 5,2 m  
2 000 kW

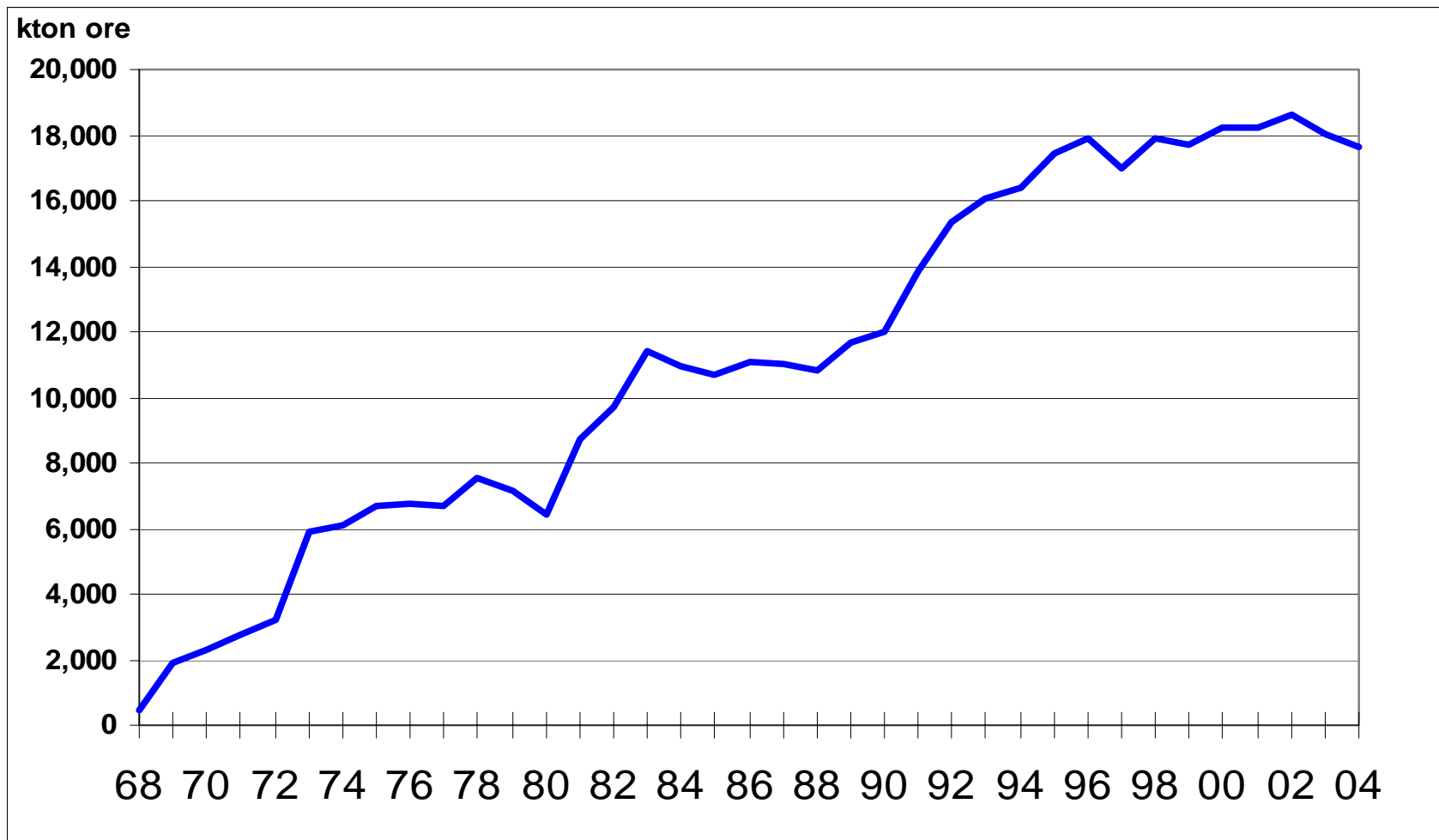
## Storage

Ore in stock 55 000 t

# Organisation



# History of production



# Aitik – 5 year summary

	2004	2003	2002	2001	2000
<b>Milled, ktonnes</b>	17,663	18,022	18,601	17,718	18,219
<b>Headgrades</b>					
Copper (%)	0.41	0.37	0.35	0.40	0.42
Gold (g/t)	0.22	0.16	0.17	0.19	0.17
Silver (g/t)	3.77	4.25	3.63	3.66	4.19
<b>Concentrate production</b>					
Copper (tonnes)	230,554	210,789	202,290	222,129	240,202
<b>Concentrate grade</b>					
Copper (%)	28.0	27.8	28.3	28.8	28.2
<b>Metal content</b>					
Copper (tonnes)	64,498	58,687	57,293	63,940	67,828
Gold (kg)	1,985	1,383	1,542	1,698	1,542
Silver (kg)	44,946	55,176	47,409	48,550	56,606
<b>Financials</b>					
EBITDA (MSEK)	619	128	132	244	307
EBIT (MSEK)	522	34	36	153	216
Cash Cost US\$/lb Cu	64	64	56	51	55
Capex (MSEK)	242	175	138	251	140



# Aitik – EBIT, MSEK

