

# Summary Report Boliden Aitik

## Mineral Resources and Mineral Reserves 2025



### Authors

Ian McGimpsey, Sofia Höglund, Alexandra Voronchikhina, Andreas Berggren, Nils Eriksson, Ahmet Seyyah, Ellen Svens, Maria Lopez Diaz, Serkan Erkara, Matthew Cornelius, Matti Linna, Johanna Lundin

### Boliden AB

P.O. Box 44, SE-101 20 Stockholm, Sweden  
Visiting address: Klarabergsviadukten 90

Registration No. 556051-4142  
Phone: +46 (0)8 610 15 00

[www.boliden.com](http://www.boliden.com)

1 (31)

## Contents

---

<b>1</b>	<b>Summary .....</b>	<b>3</b>
1.1	Competence.....	4
<b>2</b>	<b>General introduction.....</b>	<b>5</b>
2.1	Pan-European Standard for Reporting of Exploration Results, Mineral Resources and Mineral Reserves – The PERC Reporting Standard.....	5
2.2	Definitions.....	5
<b>3</b>	<b>Aitik .....</b>	<b>7</b>
3.1	Project outline .....	7
3.2	Major changes.....	7
3.3	Location.....	7
3.4	History.....	8
3.5	Ownership and Royalties.....	9
3.6	Environment, Social and Governance (ESG) and Permits .....	10
3.7	Geology .....	16
3.8	Exploration procedures and data .....	21
3.9	Exploration activities .....	21
3.10	Mining methods, mineral processing and infrastructure .....	21
3.11	Prices, terms and costs.....	24
3.12	Mineral resources.....	25
3.13	Mineral reserves.....	26
3.14	Comparison with previous year .....	27
3.15	Reconciliation .....	29
<b>4</b>	<b>References .....</b>	<b>31</b>

---

**Boliden AB**

# 1 Summary

Between 2024-12-31 and 2025-12-31 the Mineral Reserves (Table 1) have decreased by 4% to 1051Mt (million metric tonnes). During the same period the combined Mineral Resources have increased by 31% to 1 182 Mt.

**Table 1. Summation of total Aitik operational area Mineral Reserves and Resources per 2025-12-31. Reserves and Resources from 2024-12-31 as comparison to the right**

Classification	2025					2024			
	kt 2025-12-31	Au (g/t)	Ag (g/t)	Cu (%)	Mo (g/t)	kt 2024-12-31	Au (g/t)	Ag (g/t)	Cu (%)
<b>Mineral Reserves</b>									
Proved	173 000	0.10	1.5	0.21	24	175 000	0.09	1.4	0.20
Probable	878 000	0.18	1.3	0.24	23	916 000	0.17	1.3	0.24
<i>Total</i>	1 051 000	0.16	1.4	0.24	23	1 091 000	0.16	1.3	0.23
<b>Mineral Resources</b>									
Measured	269 000	0.11	0.6	0.16	19	211 000	0.12	0.7	0.17
Indicated	536 000	0.12	0.8	0.17	19	379 000	0.12	0.8	0.17
<i>Total M&amp;I</i>	805 000	0.12	0.7	0.17	19	590 000	0.12	0.7	0.17
Inferred	378 000	0.08	0.8	0.17	23	315 000	0.07	0.8	0.17

Notes on Mineral Resource and Mineral Reserve statement.

- *Mineral Resource and Mineral Reserves is a summary of Resource estimations and studies made over time adjusted to projected mining situation of December 31.*
- *Mineral Resources are reported exclusive of Mineral Reserves.*
- *Mineral Reserve and Resources are reported without dilution.*
- *Reasonable Prospects for Eventual Economic Extraction is defined for the Mineral Resource by a simplified undiscounted pit optimization.*
- *The Mineral Reserve is defined by the Life of Mine Plan. However, 34Mt of inferred Resources inside the Reserve shell are reported as Resources instead of Reserves.*
- *The cut-off for the Mineral Reserve is based on location cost analysis and varies between 0.04% and 0.14% Cu. The cut-off for the Mineral Resource is 0.06%.*
- *The Mineral Reserve includes portions of the Life of Mine Plan where not all permits are currently in place, but there is a high confidence that they will eventually be granted. Proved Mineral Reserves are covered by all necessary permits.*
- *This year Mo is included in the resource statement even if Mo is not currently an economic metal in Aitik, although studies on recovering Mo are planned for 2026*
- *Tonnes and grades are rounded which may result in apparent summation differences between tonnes, grade and contained metal content.*

## Boliden AB

## 1.1 Competence

The compilation of this report has been completed by a team of professionals who work directly for Boliden Mineral AB and are listed as contributors in Table 2, along with responsible Competent Persons (CP).

**Table 2. Contributors and responsible competent persons for this report**

Description	Contributors	Responsible CP
<b>Lead Competent Person</b>		<b>Ian McGimpsey</b>
Geology	Ahmet Seyyah, Ellen Svens	Ian McGimpsey
Resource estimations	Maria Lopez Diaz	Sofia Höglund
Mine Planning	Serkan Erkara, Matthew Cornelius	Alexandra Voronchikhina
Mineral Processing	Matti Linna	Andreas Berggren
Environmental, social and governance (ESG)	Johanna Lundin	Nils Eriksson

The report has been verified and approved by Ian McGimpsey who is employed by Boliden as Head of Section Aitik Near Mine Exploration and is a member of FAMMP<sup>1</sup>. Ian McGimpsey has over 15 years of experience in the Exploration and Mining Industry.

Sofia Höglund is employed by Boliden as Head of department of Mineral Resources and Project Evaluation and is a member of FAMMP. Sofia Höglund has over 15 years of experience in the Exploration and Mining Industry.

Alexandra Voronchikhina: Section Manager of Mine Planning, Mining Technology, Boliden Mines. Alexandra has over 17 years in the industry and is involved in various parts of the mining projects including pit optimization, mine design, mine planning. Alexandra is a member of FAMMP and is a Competent Person (according to PERC)

Andreas Berggren has worked for Boliden for more than 25 years in various positions, both in production and at the Technology staff. Currently he is manager for the Project and Operational development department at Business Development.

Nils Eriksson works for Boliden as Head of Section for Permitting and Environmental Support. Nils is a member of FAMMP and has more than 25 years of experience in the mining industry.

---

<sup>1</sup> Fennoscandian Association for Metals and Minerals Professionals

## 2 General introduction

This report is issued annually to inform the public (shareholders and potential investors) of the mineral assets in Aitik held by Boliden. The report is a summary of internal / Competent Persons' Reports for Aitik. The Boliden method of reporting Mineral Resources and Mineral Reserves intends to comply with the Pan-European Reserves and Resources Reporting Committee (PERC) "PERC Reporting Standard 2021".

The PERC Reporting Standard is an international reporting standard that has been adopted by the mining associations in Sweden (SveMin), Finland (FinnMin) and Norway (Norsk Bergindustri), to be used for exploration and mining companies within the Nordic countries.

Boliden is reporting Mineral Resources exclusive of Mineral Reserves.

### 2.1 Pan-European Standard for Reporting of Exploration Results, Mineral Resources and Mineral Reserves – The PERC Reporting Standard

PERC is the organisation responsible for setting standards for public reporting of Exploration Results, Mineral Resources and Mineral Reserves by companies listed on markets in Europe. PERC is a member of CRIRSCO, the Committee for Mineral Reserves International Reporting Standards, and the PERC Reporting Standard is fully aligned with the CRIRSCO Reporting Template.

The PERC standard sets out minimum standards, recommendations and guidelines for Public Reporting of Exploration Results, Mineral Resources and Mineral Reserves in Europe.

### 2.2 Definitions

Public Reports on Exploration Results, Mineral Resources and/or Mineral Reserves must only use terms set out in the PERC standard.

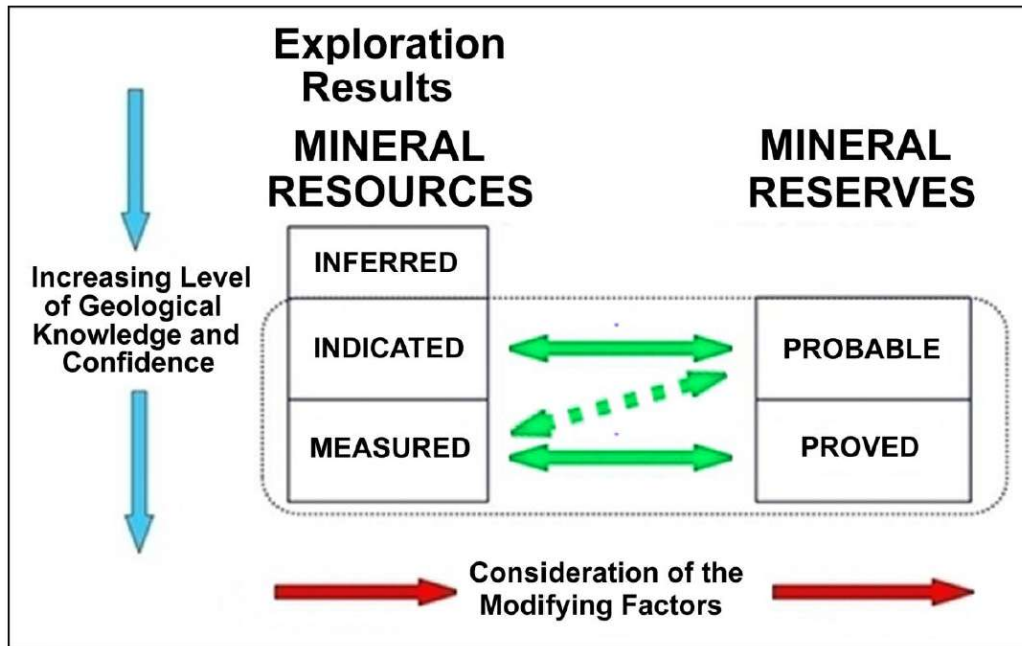


Figure 1. General relationship between Exploration Results, Mineral Resources and Mineral Reserves (PERC 2021).

## 2.2.1 Mineral Resource

A Mineral Resource is a concentration or occurrence of solid material of economic interest in or on the Earth's crust in such form, grade or quality and quantity that there are reasonable prospects for eventual economic extraction. The location, quantity, grade or quality, continuity and other geological characteristics of a Mineral Resource are known, estimated or interpreted from specific geological evidence and knowledge, including sampling.

## 2.2.2 Mineral Reserve

A Mineral Reserve is the economically mineable part of a Measured and/or Indicated Mineral Resource. It includes diluting materials and allowances for losses, which may occur when the material is mined or extracted and is defined by studies at Pre-Feasibility or Feasibility level as appropriate that include application of Modifying Factors. Such studies demonstrate that, at the time of reporting, extraction could reasonably be justified.

## 3 Aitik

### 3.1 Project outline

Aitik is a Palaeoproterozoic porphyry Cu-Au-Ag deposit, mined as an open pit complex consisting of the main pit, "Aitik", and two satellite pits "Salmijärvi", which was mined out during 2023, and "Liikavaara", which began production in 2024. The mining in Aitik took place at three pushbacks of the main Aitik pit - designated S3, N6 and N7. The mined-out ore tonnage in 2025 totaled 39 mt. Copper is the most valuable commodity in Aitik, accounting for about 80% of the revenue. The second most valuable commodity is Gold at 16%, followed by Silver at 4%.

### 3.2 Major changes

In 2025 the total Mineral Reserves in Aitik decreased by 40 Mt (million metric tonnes) to 1051 Mt. During the year, 39 Mt ore has been processed from pushbacks N6, N7, S3 and satellite pit Liikavaara. 3 Mt ore was mined outside of reserve within Liikavaara pit. There has been a reduction of 4.4 Mt resulting from the application of variable cut-off and Liikavaara design change. Counter-acting the decreases has been the addition of 4.2 Mt Reserves that are converted from Resource as a result of the latest Liikavaara pit design update.

The combined Measured and Indicated Resource has increased by 214 Mt to 805 Mt, and the Inferred Resource increased by 63 Mt to 378 Mt. The combined Mineral Resources have increased by 31% to 1 182 Mt. An increase of 35 Mt is contributed to exploration drilling and the rest is due to increased metal prices even if an updated cost model mitigated the increase.

#### 3.2.1 Technical studies

An application for a new permit covering the entire Aitik operation was submitted to the Land and Environment Court in December 2023 and is currently under review. The application was formally announced in May 2025, and a court hearing is scheduled for March 2026.

During 2025, ongoing communication has taken place, and additional documentation has been submitted to the Environmental Court as well as to authorities with an interest in the permit process. Several areas of study have been completed or are ongoing; however, the main activities relate to water management, water treatment, closure processes, and emissions to air and water.

Molybdenum is not currently recovered from the Aitik processing plant and a study will commence under 2026 to assess the financial and technical viability.

### 3.3 Location

The Aitik mine is located in Gällivare municipality, Norbotten county, northern Sweden, about 60 km north of the Arctic Circle and 15 km east of Gällivare town center (Figure 2). The Liikavaara deposit is

---

**Boliden AB**



located 3 km east of Aitik. The mining area consists of open pits, waste rock and overburden dumps, an industrial area hosting maintenance and office facilities, a concentrator plant, a tailings management facility, and a rail transport terminal.

Sulphide concentrate, containing payable copper, gold, and silver, is transported by rail to Boliden Mineral AB's Rönnskär smelter located about 350 km to the south of Aitik in Skelleftehamn.

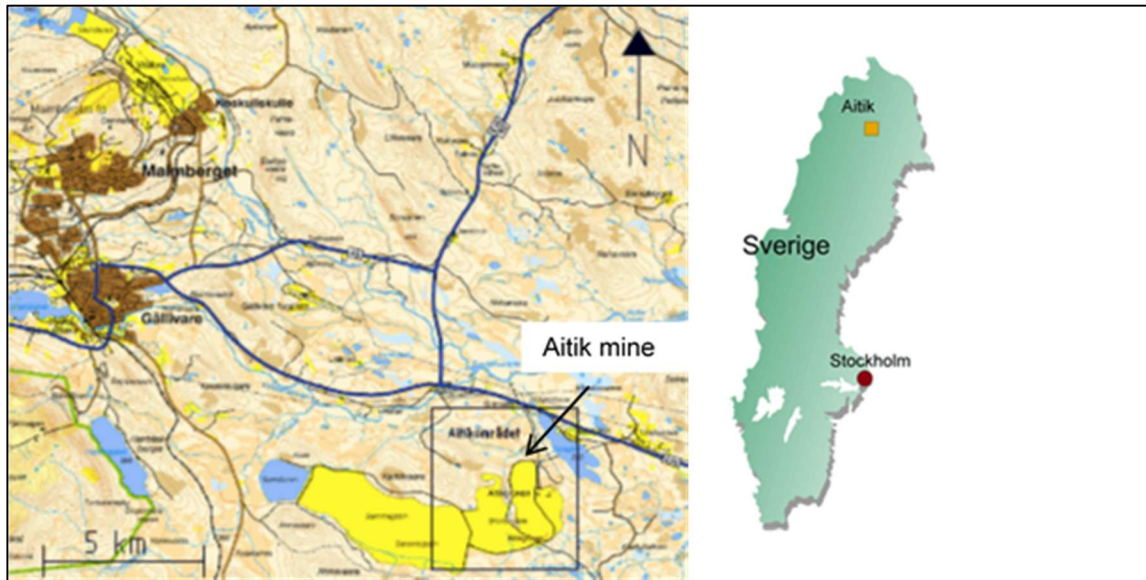


Figure 2. Location of the Aitik mine

### 3.4 History

The following is a short summary describing the discovery and development of the Aitik deposit:

- 1930: Several boulders with significant amounts of chalcopyrite were discovered in the vicinity of Liikavaara and Aitikvaara by local prospectors.
- 1948-1964: Geochemical and geophysical surveys are carried out. Definition drilling of the Aitik and Liikavaara deposits takes place.
- 1965: Feasibility study completed.
- 1966: Construction of the Aitik mine and concentrator is begun.
- 1968: First production at Aitik. Initial production rate is 2 Mt/yr at a head grade of 0.51% Cu.
- 1972 –2000: Continuous expansions from 2Mt/yr to 18Mt/yr: Operating grade head during this period fluctuates in the vicinity of 0.40% Cu, 0.25 g/t Au, and 4 g/t Ag.
- 2010: Construction phase of Aitik 36 expansion project complete.
- 2025: Year-end ore processing achieves 39.2 Mt at a head grade of 0.15% Cu, 0.07 g/t Au, and 0.7 g/t Ag.

#### Boliden AB



Table 3. Annual production numbers for 2000-2025. Between 1968 and 2000 the processed ore tonnage and grades are presented with 5-year intervals.

Year	Ore kton	Cu %	Au g/t	Ag g/t	Recovery (%)		
					Cu	Au	Ag
1968	435	0.39	-	-	90.1	-	-
1970	2285	0.50	-	-	89.4	-	-
1975	6711	0.40	0.24	3.7	90.2	46.9	68.1
1980	6436	0.39	0.24	3.6	88.5	44.0	69.7
1985	10 713	0.40	0.28	3.7	90.4	56.0	64.0
1990	12 015	0.38	0.24	3.8	89.1	56.3	69.0
1995	17 465	0.38	0.22	3.2	90.5	50.7	75.2
2000	18 219	0.42	0.17	4.1	89.3	49.5	74.9
2001	17 723	0.40	0.19	3.6	89.4	50.1	75.3
2002	18 601	0.35	0.17	3.6	88.4	48.2	70.4
2003	18 022	0.37	0.16	4.2	88.7	48.5	72.5
2004	17 663	0.41	0.23	3.8	89.0	50.6	67.6
2005	16 674	0.44	0.22	3.6	89.4	50.7	69.1
2006	18 481	0.40	0.25	2.7	89.6	50.7	70.3
2007	18 178	0.32	0.14	3.7	86.9	45.4	63.2
2008	17 813	0.30	0.14	2.8	87.9	48.5	64.9
2009	18 791	0.27	0.13	2.0	89.7	55.1	66.8
2010	27 596	0.27	0.15	2.1	90.0	53.5	64.4
2011	31 541	0.24	0.14	2.2	89.8	54.7	64.4
2012	34 321	0.22	0.11	2.5	89.9	50.7	61.0
2013	37 070	0.21	0.10	2.3	89.6	49.4	65.1
2014	39 090	0.20	0.09	2.1	88.4	49.3	66.3
2015	36 361	0.21	0.11	2.4	87.2	50.2	69.1
2016	36 051	0.22	0.11	2.1	88.3	51.2	74.3
2017	39 045	0.28	0.13	2.0	89.5	55.7	80.2
2018	38 472	0.29	0.14	1.8	90.4	57.6	78.6
2019	40 661	0.25	0.13	1.2	89.2	56.8	80.2
2020	41 661	0.24	0.13	1.1	90.1	57.1	78.2
2021	40 100	0.22	0.11	0.9	90.2	57.0	75.6
2022	43 297	0.20	0.10	0.9	90.5	58.6	75.3
2023	40 689	0.18	0.08	0.8	90.2	53.5	76.4
2024	40 840	0.17	0.07	0.7	88.3	48.6	78.4
2025	39 207	0.15	0.07	0.7	84.9	50.3	67.2

### 3.5 Ownership and Royalties

Boliden Mineral AB owns 100 % of the Aitik mine. In Aitik there is a mineral charge for the processing concessions Aitik K nr 4 (the now mined out Salmijärvi pit), Aitik K nr 5 (towards Aitik East) and Liikavaara

#### Boliden AB

P.O. Box 44, SE-101 20 Stockholm, Sweden

Registration No. 556051-4142

[www.boliden.com](http://www.boliden.com)

Visiting address: Klarabergsviadukten 90

Phone: +46 (0)8 610 15 00

9 (31)

K nr 2. The mineral charge is 0.2% of the value of metal recovered after processing (yield losses are subtracted). The royalty payment is to be distributed at a rate of  $\frac{3}{4}$  to the surface owner (Boliden) and  $\frac{1}{4}$  to the Swedish state. Calculation and other details of this royalty is governed by the Swedish Mineral Law (Minerallag (1991:45)).

## **3.6 Environment, Social and Governance (ESG) and Permits**

### **3.6.1 Existing permits**

Current processing concessions (Aitik K nr 1-5) encompass the entire area where mining of ore in the Aitik and Liikavaara (Liikavaara K nr 1-2) pits is planned according to the present LOMP. Additional mining concessions over the Aitik East area will be required in the future to be able to extract the complete mineral reserves.

According to the current environmental permit for the Aitik operations (partial verdict from the land- and environmental court October 3<sup>rd</sup>, 2014, in case M3092-12, in all material respects established by the supreme land- and environmental court January 22<sup>nd</sup>, 2016, in case M10031-14) Boliden Mineral AB is allowed to mine and concentrate up to 45 Mton ore/year. The permit is limited in time, in that the permitted amount of deposited waste rock has been calculated to be reached during year 2027. An application to extend the amount of waste rock that can be stored was filed to the land and environmental court during 2023. During 2025 the application was withdrawn due to the need for increased storage of waste was not as urgent as previously assumed and now inline when also additional storage of tailings were needed. Additional storage capacity of storage of waste are included in the application for a new environmental permit handed in 2023.

A court ruling from the Land- and Environmental Court was obtained in July 2024 where the time for water management activities related to the construction of dam extensions was extended until December 31, 2028. The environmental permit for the Liikavaara open pit was granted April 29<sup>th</sup>, 2021 (case M2672-18), and came into legal force February 21<sup>nd</sup>, 2022.

An application for a new permit for the entire Aitik (incl. Liikavaara) operations was filed to the land and environmental court at the end of the year 2023. This application includes widening of the Aitik pit towards the west to allow for the removal of waste rock and raising the existing tailings management facility (TMF) in order to allow tailings disposal for the permissible 15-year period. This has been considered in the reserve classification.

In relation to the recent developments regarding how to assess and evaluate the risk of static liquefaction, comprehensive studies of the tailings characteristics and the foundation characteristics were performed at Aitik. Based on results of these investigations, Boliden came to the conclusion that additional buttressing material was needed to guarantee dam stability if the tailings would liquefy. In 2023 Boliden submitted an application regarding additional dam safety measures within already permitted dam heights and the necessary relocation of infrastructure due to the extended footprint of the dam. A court ruling from the Land- and Environmental Court was pronounced in July 2024, where almost all dam safety measures, both preventive and those to be carried out afterward, were approved. The court ruling was appealed by the Swedish Agency for Marine and Water management to the Land and Environmental Court of Appeal

---

#### **Boliden AB**

which aligned with the lower court's decision but was then appealed to the Supreme Court. Eventually the Supreme court ruled aligned with both the previous courts and the permit came into force April 2025.

Boliden has performed studies regarding the best dam construction method to use in order to optimize the future use of the existing TMF. A plan has been drawn up for future elevations, which means a transition from inward to mainly centerline dams. This was included in the new permit application submitted at the end of year 2023.

Future development of Aitik according to the LOMP will require the Municipality of Gällivare to up-date the local planning conditions. This work is ongoing.

**Table 4. Current processing concessions for Boliden Aitik; please see Figure 3 for the locations.**

<b>Name</b>	<b>Comprises</b>	<b>Ref</b>	<b>Decision date</b>	<b>Valid until</b>
Aitik K nr 1	Cu, Ag, Au	320-669-98	1999-12-16	2035-01-01
Aitik K nr 2	Cu, Ag, Au	22-1367-2000	2001-07-12	2026-07-11
Aitik K nr 3	Cu, Ag, Au	22-122-2003	2003-05-14	2028-05-13
Aitik K nr 4	Cu, Ag, Au, Mo	22-88-2005	2007-08-29	2032-08-28
Aitik K nr 5	Cu, Ag, Au, Mo	22-36-2015	2015-08-12	2040-08-11
Liikavaara K nr 1	Cu, Ag, Au	320-665-98	1999-12-28	2035-01-01
Liikavaara K nr 2	Cu, Ag, Au, Mo	22-254-2018	2023-04-23	2048-06-20

---

**Boliden AB**

P.O. Box 44, SE-101 20 Stockholm, Sweden  
Visiting address: Klarabergsviadukten 90

Registration No. 556051-4142  
Phone: +46 (0)8 610 15 00

[www.boliden.com](http://www.boliden.com)

11 (31)



Figure 3. Map showing mining concessions at Aitik and Liikavaara. Aerial photo from summer 2018.

### 3.6.2 Necessary permits

As described above, permitting is continuously ongoing at Aitik. New permits are needed to adjust to changes in the operations and to continue raising the dams around the tailings facility. This results in a series of ongoing and future permitting processes in terms of:

- New permit for the entire operations in Aitik (incl Liikavaara) from 2028 and onward,
- Additional mining concession and environmental permits over the Aitik East area,
- Update the local planning conditions,
- Molybdenum is not included in the current permit process and would require a separate application should it prove to be a financially viable opportunity.

### 3.6.3 Environmental, Social and Governance Commitments

#### 3.6.3.1 ESG Commitments

Boliden's business model sets the company ESG priorities, and take into consideration the risks and opportunities identified by business intelligence and risk mapping, as well as applicable requirements and expectations such as:

- Stakeholder expectations
- Current and potential legislative trends
- ISO 9001, 45001, 14001 and 50001 standards and Forest Stewardship Council (FSC® COC-000122)
- OECD Due Diligence Guidance for Responsible Supply Chains of Minerals from Conflict-affected and High-risk Areas
- GRI Standards (Global Reporting Initiative)
- UN Sustainable Development Goals (SDGs)
- UN Global Compact
- ICMM Mining principles

The company regularly consults prioritized stakeholder groups on our sustainability performance from a broader perspective. These stakeholders are asked to comment on Boliden's performance to drive further improvement.

Boliden is a member of ICMM and the national mining associations in the countries where Boliden Mines operates. These commitments imply implementing relevant international and national Environmental Management System (EMS) standards and guidelines, such as, e.g., the Global Industry Standard on Tailings Management on an international level and Mining RIDAS on a national level. Aitik reached full GISTM compliance in mars 2025. In addition to this, Boliden Mines is certified according to a series of standards, such as:

- ISO 14001:2015 - Environmental management systems
- ISO 45001:2018 - Occupational health and safety management systems
- ISO 50001:2018 - Energy management systems

Boliden has implemented an integrated management system (Boliden Management System, BMS) which sets a common base for all activities developed within the company.

Boliden strives to run a responsible business and expects its business partners to do the same. Good business ethics are essential for sustainable and successful business. Boliden has an ethics and compliance department to boost its compliance work. The department is responsible for the strategic development and coordination of Boliden's work regarding anti-money laundering, anti-corruption, competition law, sanctions, human rights, data protection, whistleblowing and Boliden's employees and management work together to create a compliance culture in which everyone knows what is expected of them - Boliden's codes of conduct. Regular risk assessments, training, audits and effective controls are important parts of Boliden's compliance efforts. The Group's whistleblower channel enables all employees and external stakeholders to report suspected and actual misconduct confidentially and anonymously. If

#### Boliden AB

misconduct is proven, disciplinary actions must be taken. Reprisals against anyone reporting misconduct in good faith will not be tolerated. Group management and the Board of Directors receive regular reports on risks, non-compliance and the status of initiatives in progress.

Boliden's Code of Conduct provides a framework for corporate responsibility based on the company's values and ethical principles. All employees and members of the Board are subject to the Code, which is based on international standards and relevant legislation. As a complement to the Code, there are internal policies that all employees are expected to comply with. Boliden strives for a sustainable value chain and therefore applies an overarching business ethics and risk management strategy when selecting business partners. The Business Partner Code of Conduct reflects the requirements placed on Boliden's own organization and sets the lowest standard of ethical conduct required of all parties in the value chain, whether Boliden is the buyer or seller. As with the internal Code of Conduct, this code is based on international standards such as the UN's Global Compact, the ILO's standard core conventions and guidance from the OECD. Compliance and sustainability risks are assessed when selecting business partners. If there is a risk of non-compliance by a business partner, a more detailed review is made. Depending on the outcome, an action plan may be developed and agreed upon, or the business relation may be terminated or rejected.

Boliden is a member of the United Nations Global Compact and works constantly to implement its ten principles, including preventing and limiting negative impact in our own operations and those of our external business partners. Boliden runs operations in countries where the risk of human rights violations is considered low. No operations are conducted anywhere in UNESCO's World Heritage List. Boliden supports the right of indigenous peoples to consultations under Svemin's interpretation of Free, Prior and Informed Consent (FPIC). Boliden strives for fair working conditions, and is against any form of harassment, discrimination and other behavior that may be considered as victimization by colleagues or related parties. In addition to this, aspects such as child and forced labor as well as the freedom to form and join trade unions are taken into account when evaluating business partners.

Anti-corruption forms a central part of the ethics and compliance work, and Boliden has a zero-tolerance policy regarding all types of bribery and corruption. Boliden has an anti-money laundering policy for identifying and managing risks in various parts of the business and to strengthen its anti-money laundering efforts.

### **3.6.3.2 Socio-economical impact**

A comprehensive study of the socio-economical impacts of Aitik was performed during 2023. Aitik is located in the municipality of Gällivare. Typically, inland municipalities in northern Sweden are characterized by high average age, shrinking population, low education level and high unemployment. Gällivare has, since the 1960s, had a similar trend with regard to average age, shrinking population and low education level. However, Gällivare has one of the lowest unemployment rates and highest employment rates in Sweden. The average income is also amongst the highest in Sweden.

---

#### **Boliden AB**



The mining industry is the likely reason for the low unemployment rate, and the high average income in the municipality. The mining industry, with Boliden Aitik and LKAB Malmberget mines within the municipality, generates not only direct employment, but also serves as an engine for the local economy.

The Aitik mine has approximately 900 employees, of which 93% are local residents within Gällivare municipality. Aitik is the biggest private employer in the municipality and employs 9.9% of the total workforce in the municipality. In addition, it is estimated that Aitik generates 1477 indirect jobs (entrepreneurs and providers of services and goods) and additional induced jobs as a direct consequence of the activities at Aitik. At Aitik, women constitute more than 30% of the employees, contributing to the strengthening women's position on the job market in Gällivare.

Aitik is assessed to have a significant positive impact on the socio-economical situation in Gällivare municipality.

In addition to jobs and taxes, Aitik contributes to social sustainability and the socio-economical situation in many other ways. As an example, Boliden Aitik is engaged in, and contributes to many local activities and organisations. The effect of this engagement is difficult to quantify but is assessed to positively contribute to the development of the area.

Northern Sweden has a long tradition of mining and extractive industry which has resulted in an acceptance and tolerance even for the negative impacts caused by the industry. Examples of this are the re-location of the town of Kiruna due to the expanding subsidence area around the LKAB Kiruna mine, and the re-location of large parts of the town of Malmberget due to the same reason at LKAB's Malmberget mine. This is also the case at Aitik where Boliden has re-located 41 households in the villages of Sakajärvi, Liikavaara and Laurajärvi as the living conditions in these three villages were assessed to become poor when the Liikavaara pit opens.

### **3.6.3.3 Communities and landowners**

The area surrounding Aitik is mainly forest, often with high natural conservation values. The surface waters surrounding Aitik are to a large extent declared as Natura 2000 areas due to their high conservation values.

Apart from forestry and reindeer herding, the most common land uses are hunting, fishing, berry picking and recreation. Aitik has a significant impact on land use in the local area as the mining area is surrounded by a fence for security reasons. This limits access and cuts off original access routes and implies additional work for the active reindeer herders. Boliden tries to compensate for this inconvenience by providing alternative access roads as well as economic compensation to the reindeer farmers.

### **3.6.3.4 Indigenous people**

Aitik is located within the reindeer management area for Gällivare forest-Sámi community. This Sámi community conducts their activities within an area stretching from the town of Gällivare down to the

---

#### **Boliden AB**

coast north of the Lule-river. Within the community there are approximately 20 active reindeer herders, 270 reindeer owners, and the maximum number of reindeer is 7 000 in the winter. The community is divided into 8 groups.

Gällivare forest-Sámi community keep their reindeer in a traditional way in close contact to the environment where a fundamental aspect is access to continuous and functional grazing lands with undisturbed grazing for the reindeers. Within the lands used by the community there are 8 areas declared to be of national interest for the reindeer management. One of these areas, Leipojärvi, is located north of Aitik and is affected by the Liikavaara expansion.

In general, for the reindeer management a single project, for example, Liikavaara is not the main problem, but rather the accumulated pressure on their lands. Gällivare forest-Sámi community in general, and particularly the Rattuka-group within the community, which is active around Aitik, is affected by the mining activities at Aitik. Mining affects reindeer management in various ways, such as its land requirements, noise, dust and transport which results in the reindeer avoiding the areas around Aitik. The fence surrounding Aitik complicates the movements of the reindeer herds, and the Liikavaara expansion affects 4% of the Leipojärvi area during the operational time of Liikavaara.

Boliden Aitik is aware of the consequences and the problems the mining at Aitik causes for Gällivare forest-Sámi community and in particular for the Rattuka-group. In order to minimize and compensate for the impacts a well-established dialogue is maintained between Aitik and the Sámi community. Within this dialogue, the mutual understanding of the two businesses is favored, and measures to minimize and compensate for impact are developed. There is also an agreement between Boliden and the Sámi community in place regulating amongst other aspects the economic compensation to be paid to Gällivare forest-Sámi community.

In addition to this, Boliden is engaged in a series of research projects and compensation measures to, e.g., improve forestry management to enhance lichen growth or facilitate the movements of the reindeer herds.

### **3.6.3.5 Historical legacy**

There are no historical legacy objects within Aitik.

## **3.7 Geology**

### **3.7.1 Regional**

Northern Norrbotten forms one of the major ore districts within Sweden and is a major producer of Fe, Cu and Au. It is situated approximately 250 km north of the Skelleftea district and covers an area of approximately 20,000 km<sup>2</sup>. Deposits within the district consist of the massive Kiruna-type apatite-iron ore deposits (IOA) (Kiruna, Malmberget) and epigenic Cu (Aitik, Phatohavare), as well as Iron Skarn and IOCG deposits (Sahavaara, Tapuli, Gruvberget) (Wanhaninen, 2005). These deposits are hosted in Karelian and

---

#### **Boliden AB**

Svecofennian units (2.2 – 1.8Ga) which overlie Archaean basement (Martinsson, O., & Wanhainen, C., 2004).

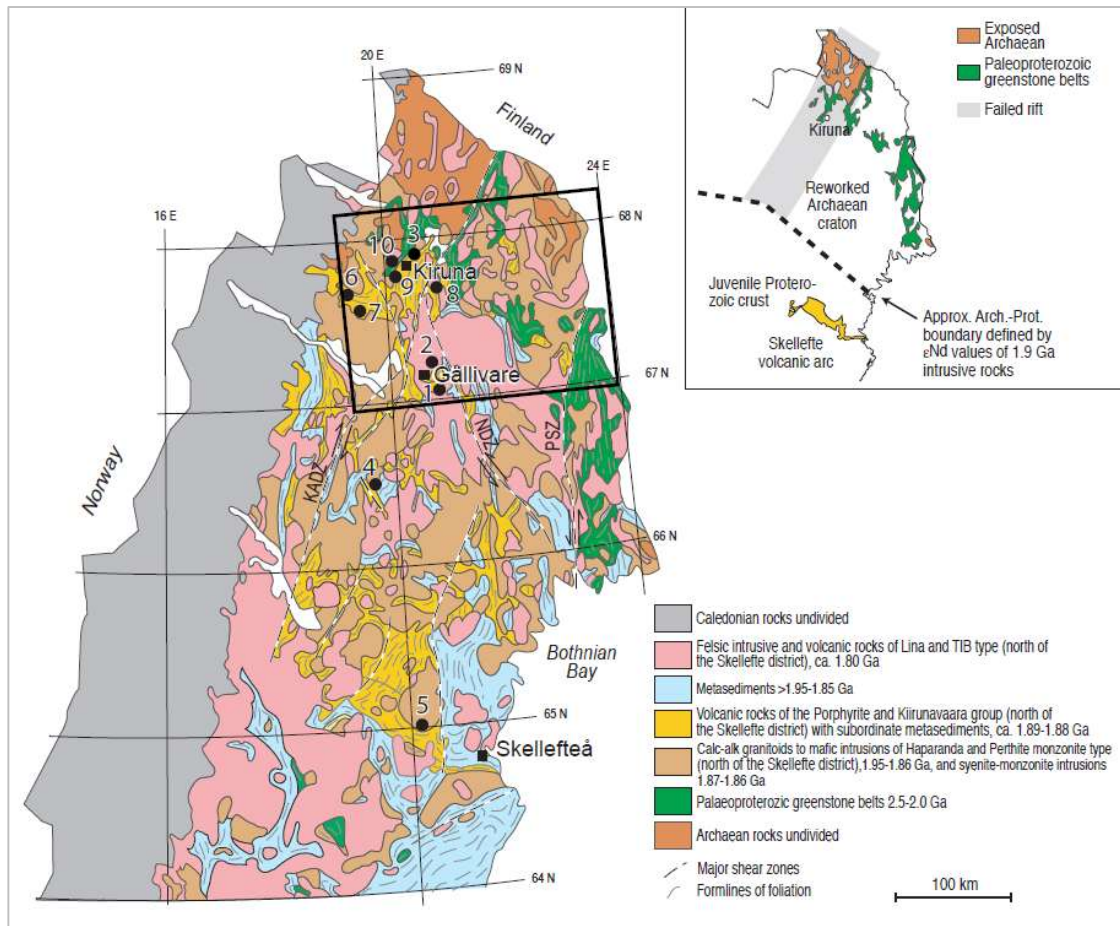


Figure 4 General geology of northern Sweden and the location of mineral deposits in northern Norrbotten (Black box). Insert highlights the location of the Archaean-Proterozoic boundary zone and aulacogen. 1. Aitik 2. Malmberget 3. Kiirunavaara 4. Vaikijaur 5. Tallberg 6. Tjårrojkä 7. Lieteksavo 8. Gruvberget 9. Phatohavare 10. Viscaria. KADZ = Karesuando Arjeplog Deformation Zone, NDZ = Nautanen Deformation Zone, PSZ = Pajala Shear Zone (Wanhainen, 2005)

### 3.7.2 Local

The Aitik deposit represents a Palaeoproterozoic porphyry-style system exhibiting characteristics of a late-stage IOCG overprinting event. Aitik is hosted within a belt of supracrustal rocks consisting of volcanoclastics, volcanics and intrusives with an intermediate affinity all of which have been metamorphosed to amphibolite facies (Bergman et al., 2001). These rocks form part of what is regionally known as the Muorjevaara Group, within the Gällivare area and the Porphyrite Group at a regional level and form the bulk of bedrock in the east of the field (Martinsson & Wanhainen, 2004).

### Boliden AB

Later stage intrusions have affected the entire area as diorite, granodioritic, quartz monzodiorite, gabbro and granite of various ages. The entire field is surrounded and locally intruded, by the Lina granite and associated pegmatites.

The Muorjevaara supracrustals group is crosscut by a major north-north-west oriented crustal scale structure, termed the Nautanen Deformation Zone (NDZ), which is known to host large numbers of sulphide showings, a few of which have been worked historically for Cu-Au. This NDZ hosts the Nautanen and Aitik deposits. The zone is typically inferred to be a steep, near-vertical structure with an undetermined amount of displacement along it, within which a strong fabric or foliation has been developed.

### **3.7.3 Property**

The Aitik, Salmijärvi, and Aitik East deposits occur along a largely continuous elongate mineralized trend (the Aitik-Salmijärvi mineralization) stretching approximately 5 km along strike from north to south averaging about 500 m in width.

Host rocks of mineralization at the Aitik deposit consist mainly of paleo-proterozoic (ca. 1.89 billion years) muscovite schists, biotite gneisses, and amphibole-biotite gneisses of volcanic and volcanoclastic origin, crosscut locally by diorite intrusive units. In places the diorite intrusive make up a significant proportion of the mineralized volume, but typically at lower-than-average grade. Foliation is well developed in the host rocks, dipping at about 50 degrees to the west. The mineralization is mainly structurally controlled and the main mineralization; Aitik is delineated by a hanging wall thrust and a footwall shear, Figure 5 and Figure 6. Main sulfide minerals in the deposit are chalcopyrite, pyrite and pyrrhotite, with significant accessory minerals including magnetite, molybdenite and sulfates. The entire package has been metamorphosed to amphibolite grade resulting in significant re-crystallization and coarsening of both sulfide and silicate minerals. Late granite pegmatite dikes crosscut the mineralized host rocks and are generally weakly mineralized to barren.

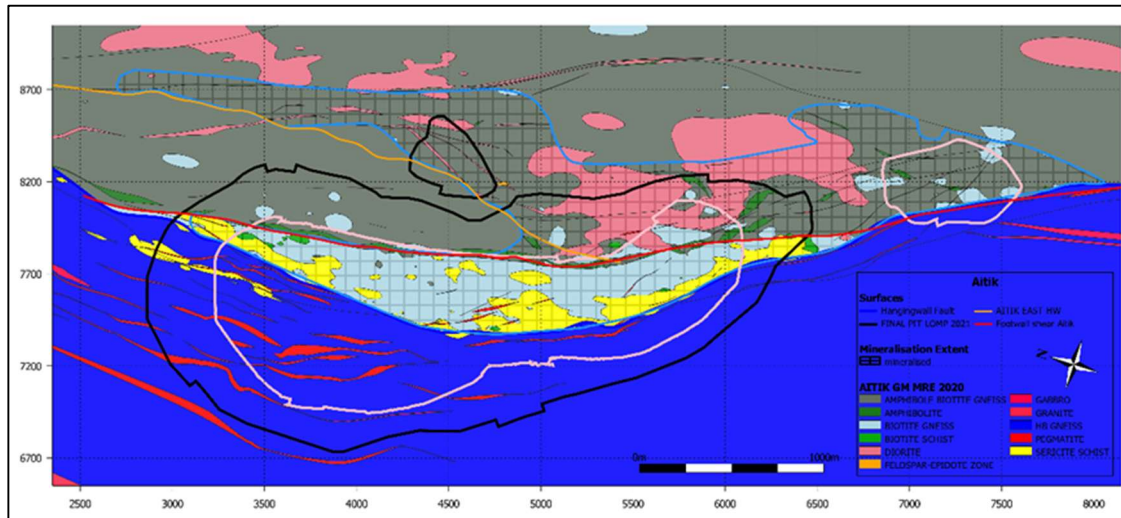


Figure 5. Plan view at -100z, showing the geology of Aitik and the planned pushbacks. The dashed Area shows the mineralization shell for > 0.06% Cu. The north arrow shows geographic north

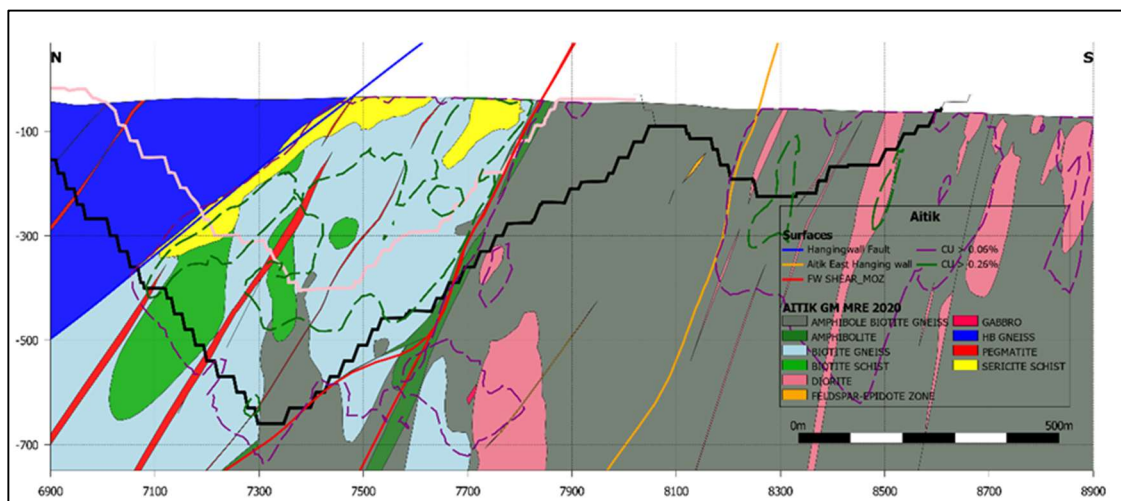


Figure 6. Cross-section A-A'

Mineralization at the Salmijärvi and Aitik East deposits is very similar in nature to the Aitik deposit, with the exception that host rocks are strongly dominated by amphibole-biotite gneisses and local diorite. Sulphide mineralization in these deposits is dominated by chalcopyrite, pyrite and pyrrhotite, although at typically lower grade than in the Aitik deposit.

About 3 km to the east, on a separate and volumetrically smaller mineralized trend, sits the paleoproterozoic Liikavaara Cu-(W-Au) deposit (Figure 7). At Liikavaara the mineralisation is hosted by quartz±tourmaline-calcite veins, calcite veins and aplite dykes that cross-cut biotite-amphibole schists and gneisses, steeply dipping to the west. The mineralisation is mainly chalcopyrite, pyrrhotite and pyrite, accessory minerals are sphalerite, galena, scheelite, molybdenite and magnetite. Liikavaara shows slight enrichments in Au, Ag and Bi.

### Boliden AB



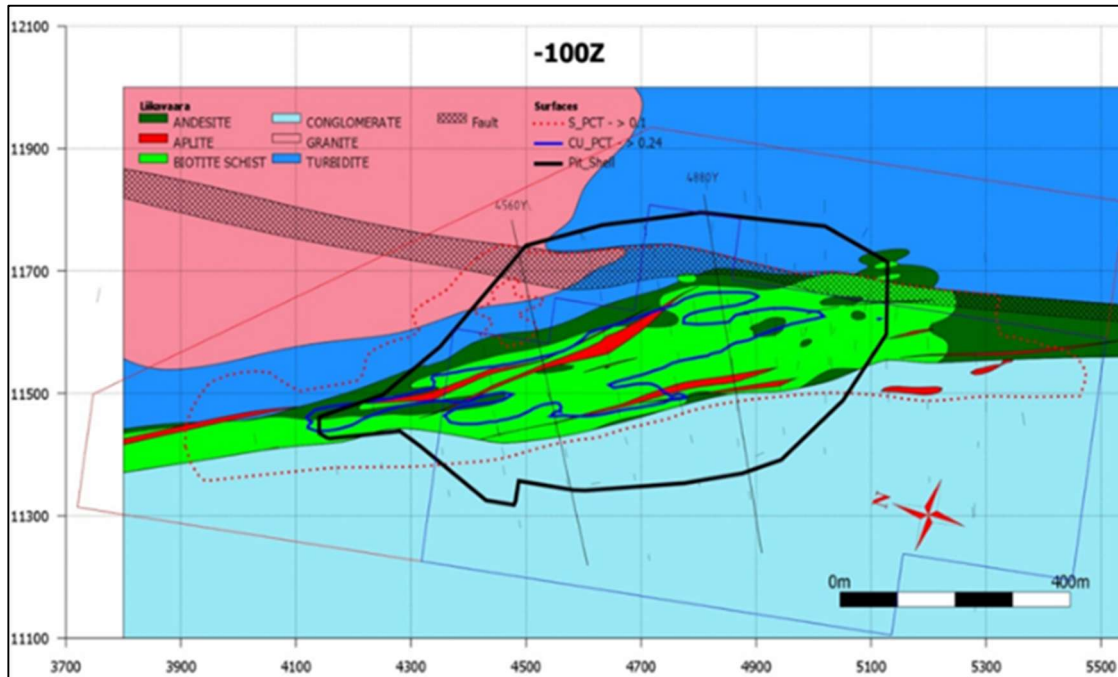


Figure 7. Plan view over Liikavaara geology at 100m depth.

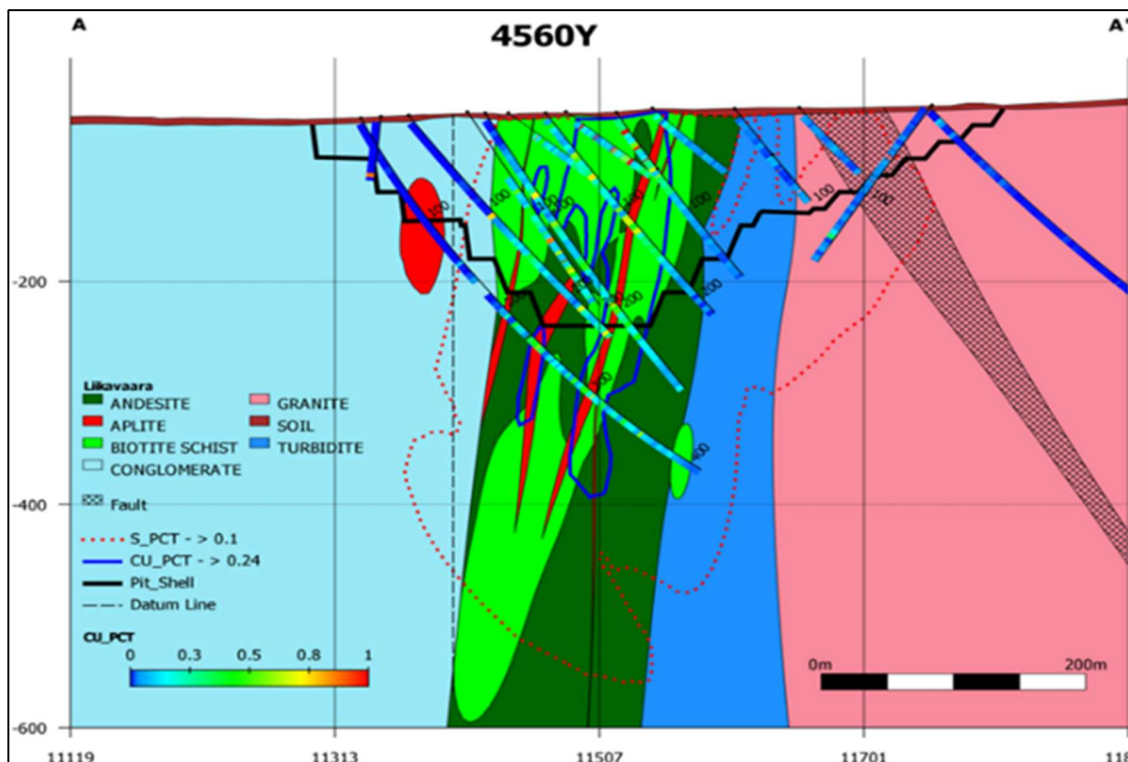


Figure 8. Liikavaara oblique cross section, along 4560Y (Figure 7), looking north. Including the planned pit shell and diamond drill holes.

## Boliden AB



## 3.8 Exploration procedures and data

### 3.8.1 Drilling techniques

Diamond drilling assay data is used for mineral resource estimation. Drilling is performed by drilling contractors and supervised by Boliden personnel. The current practice is to measure all diamond drillholes for deviation with Gyro.

### 3.8.2 Sampling, analyses, and QAQC

The drill core is logged and sampled by Boliden geologists. Standard samples, blanks and duplicates are inserted into every sample batch to ensure that the quality of the assay results is satisfactory. Sample assaying is carried out by ALS Minerals laboratories and duplicate check assays performed by BVM, both of which are independent actors. QAQC (Quality Assurance Quality Control) protocol is implemented all the way through from drilling to assaying.

Calculation of the reserves and resources estimated herein is based on the modeling of data from a total of over 1 100 drill holes in the operational area, totaling over 400 000 m of drilling and dating from the late 1950's to present. From this a total of 75 000 composites have been taken and analyzed, the majority of which for Au, Ag, Cu, Mo, and S.

For the non-legacy assay data utilized in these reserve and resource estimates (that dating from year 2008 and later), half core samples were prepared at ALS Minerals laboratory in Örebro, Sweden and then shipped to analytical facilities in either Vancouver, Canada or Ireland. Samples were analyzed for Au using a 50 g fire assay with and ICP-AES finish. Ag, Cu and Mo were analyzed using aqua regia digestion and AAS finish, and S using the Total Sulphur (LECO) technique. A system of blanks, standards, (system introduced 2011) and pulp duplicates were added to the sample stream by Boliden to verify accuracy and precision of assay results, supplementing and verifying a variety of internal QAQC tests performed by ALS Minerals.

For legacy data (that dating pre-2008) verification has been carried out mainly by using drill hole twinning as well as grade and tonnage reconciliation from producing operational areas. Not all legacy data is considered fit for purpose and is excluded from mineral resource estimations when that is the case.

## 3.9 Exploration activities

In 2025, diamond drilling was conducted by Boliden Near Mine Exploration at the N9 and the S3 area of the main pit and totaled approximately 5 700m.

## 3.10 Mining methods, mineral processing and infrastructure

### 3.10.1 Mining methods

The ore is mined in two open pits – the main pit Aitik and satellite pit Liikavaara. Aitik pit measures 4 km by 1.1 km at the surface, with the deepest point currently at 575 meters from the surface (Figure 9). The

#### Boliden AB

main pit will be expanded in all directions with five new pushbacks. Mining pushback S3 in the southern part of the main pit started in 2016. Pre-stripping of pushback N7 commenced in 2019 to allow mining to start during 2020. Stripping of the N9 pushback commenced in 2025. Mining of Liikavaara pit has commenced in 2024.

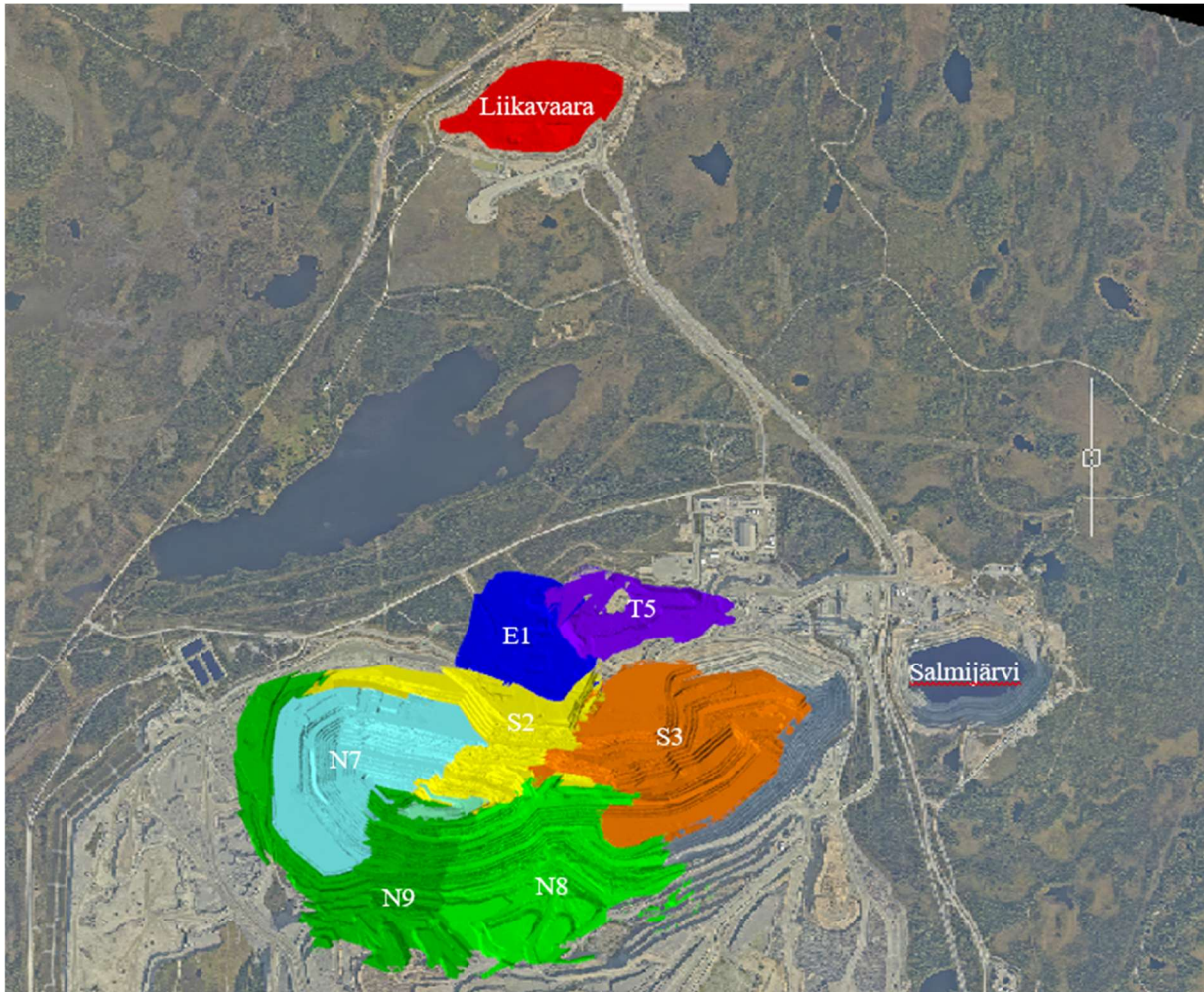


Figure 9. Overview of planned and active pushbacks at Aitik.

The ore and waste rock are blasted in 15-meter-high benches and are loaded on 300 tons of capacity-size trucks by large rope shovels or hydraulic excavators. Ore from the deeper parts of the main pit is fed to an in-pit-crusher, while ore from pushbacks near the surface is transported to a surface crusher situated on the south-east side of the main pit. Waste rock is separated in the loading process and hauled by trucks to dumps at the surface where potentially acid-forming waste is dumped separately from non-acid-forming waste.

Ore handled by the in-pit crusher is transported on conveyor belts to intermediate storage on the surface, where it is mixed with ore from the surface crusher fed in by a separate conveyor line. From the intermediate storage, another conveyor belt transports the ore up to the main ore storage beside the

## Boliden AB

processing plant. The main ore storage has a storage capacity corresponding to about one day's production, providing a buffer for production.

### 3.10.2 Mineral processing

The Aitik mine has been mined for over 50 years, and the mineralogical variations impacting metallurgical behavior are generally well known. In the process of adding new resources, mineralogy is evaluated and decisions taken on how to assess the metallurgical performance of the resource. To this end, beneficiation studies are often performed in order to predict the in-plant performance. There is also an ongoing project to improve grindability prediction, which in the future can provide added accuracy to block models and support mine planning.

In the processing plant the ore is ground in two stages, with autogenous grinding in the primary stage and pebble mill grinding in the second. Milled ore is classified using a spiral classifier. Mineral separation is done by flotation and a copper concentrate is produced. The tailings are separated into a high-sulphur (cleaner tail) and a low-sulphur (rougher tail) fraction, deposited separately at the tailings management facility. The copper concentrate is dewatered using thickeners and air pressure filters (Figure 10). The precious metals also report to the copper concentrate. The copper concentrate is trucked to an on-site railway terminal and reloaded for further transport by rail to the Boliden Rönnskär smelter in Skelleftehamn.

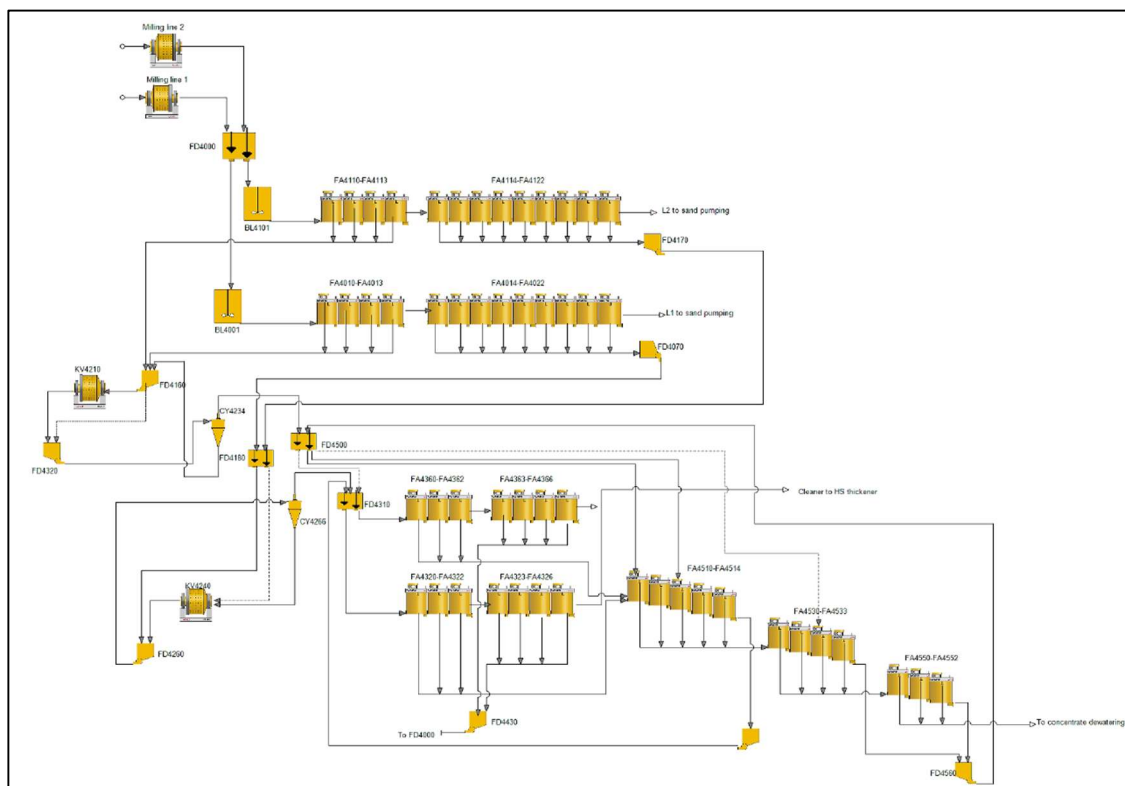


Figure 10 Aitik process flow chart

**Boliden AB**

### 3.11 Prices, terms and costs

Copper is the most valuable commodity in the Aitik Reserves and Resources, accounting for about 76% of the value using planning prices. The second most valuable commodity is gold at 21%, followed by silver at 3%. Recovery at the plant for the valuable metals reaches approximately 90% for copper, 60% for gold, and 75% for silver.

Future income assumptions are based on Boliden's planning prices, which are an expression of the anticipated future average prices for approximately 10 years (Table 5).

**Table 5. Boliden long term planning prices used in current Aitik Life of Mine pit optimization.**

	<b>Planning prices</b>
Copper	USD 8,900/tonne
Gold	USD 2,200/tr.oz
Silver	USD 27/tr.oz
USD/SEK	9.70

The Life of Mine Plan is used to determine the Mineral Reserve. The ultimate pit of Aitik main pit (and Aitik East) is based on the pit optimisation. Since activity costs are based on location and lithology type, the same variation in parameters is applied for the Liikavaara Pit. Unit costs used in the pit optimisations are shown in Table 6, together with reserve and resource cut-offs. To determine the Mineral Resource, simplified costs for pit optimisations, to determine reasonable prospects for economic extraction (RPEE), have been derived from the outcome of Aitik production 2024 without discounting or mining schedule. The cost model for resource optimization has been updated with a 10% higher mining cost for waste compared to ore in the Aitik pit and the milling cost have been updated with a 20% higher milling cost for both diorite and aplite. All costs are listed in Table 6.

**Table 6. Unit costs used within pit optimisations that determine Mineral Reserves and Mineral Resources.**

Unit costs		Aitik	Liikavaara
<b>Mineral Reserve</b>			
Mining rock (period)	SEK/t	20.5	20.5
Load and haul rock (variable)	SEK/t/km	1.1	1.1
D&B rock (variable)	SEK/t	7.6	7.6
Mining free dig (period)	SEK/t/km	7.3	7.3
Mining free dig (variable)	SEK/t	1.1	1.1
Sustaining capex mining	SEK/t	2.5	2.5
Processing & Overhead	SEK/t	42.2	42.2
Sustaining capex processing & overhead	SEK/t	2.0	2.0
Cut-off - Variable		Lowest 0.04% Cu Highest 0,14%Cu	Lowest 0.06% Cu Highest 0,14% Cu
<b>Mineral Resource</b>			
Mining	SEK/t	40/44	40
Processing & overhead	SEK/t	42/48	42/48
Cut-off		0.06% Cu	0.06% Cu

## 3.12 Mineral resources

Two separate block models are used for the Aitik Mineral Resources and Reserves. One model covers the areas of the Aitik mine: Aitik, Aitik East, and Salmijärvi; and the other model covers the Liikavaara satellite deposit which is approximately 3 km from Aitik.

Resource estimations for both Aitik and Liikavaara are conducted in Leapfrog Edge. All reported elements are estimated using Ordinary Kriging. Drill holes are composited to 5m sections for both models. In the Aitik model, Cu is capped at 2.5%, Au at 2 ppm, and Ag at 20 ppm. In the Liikavaara model, grade clamping is used instead of grade capping. Grade clamping is a method of limiting the distance from a high-grade sample that the sample is available to inform block estimations. In Liikavaara Au is clamped at 0.75 ppm, Ag at 17 ppm and Cu at 1.5%. This clamp is limited to half the normal search distance (Table 7).

All lithologies in the models have been assigned a density based on specific gravity measurements. Blocks in both models are 20m (x), 20m (y), 15m (z), with sub-blocking to 10m (x), 10m (y), 15m (z). Block sizes are summarized in Table 8 below.

### Boliden AB



**Table 7 Top capping in Liikavaara and Aitik block models.**

	<b>Liikavaara</b>	<b>Aitik</b>
	Clamping	Top cap
Cu	1.5%	2.5%
Au	0.75 ppm	2 ppm
Ag	17 ppm	20 ppm

**Table 8 Block size in Liikavaara and Aitik Resource models.**

	<b>Parent block</b>	<b>Sub-block</b>
x	20 m	10 m
y	20 m	10 m
z	15 m	15 m

Resource classification is based on quality of data, geological continuity, and knowledge of the deposit. Support for determining the Resource class comes from geostatistics such as kriging efficiency and slope of regression, as well as drill hole spacing. As a general rule drill hole spacing for a Measured Resource is 90m x 90m at Aitik, 50m (E) x 40m (N) at Liikavaara, and for an Indicated Resource 180m x 180m for Aitik and 100m (E) x 80m (N) for Liikavaara. Inferred Resources generally have no more than 200m to the nearest drill hole. The general drill hole patterns per Resource category are shown in Table 9 below.

**Table 9 General drill hole spacing per Resource category.**

	<b>Liikavaara</b>	<b>Aitik</b>
Measured	50E m * 40N m	90 m * 90 m
Indicated	100E m * 80N m	180 m * 180 m
Inferred	< 200m * 200 m	< 200m * 200 m

An initial classification is done on all blocks of the block model and then a pit optimization using Whittle software is completed for a Resource pit. All blocks above cut off within the Resource pit are then reported as the Resource as per their classification, exclusive the Reserve.

### 3.13 Mineral reserves

A Life of Mine Plan is created annually, and its results are used to determine the Reserves. Due to the pending permitting situation (see chapter 3.5), material after 2030 which otherwise would have been classed as a Proved Mineral Reserve, has been classed as a Probable Mineral Reserve. All blocks initially classed as Inferred in the Reserve pit are reported as Inferred Resource, this equaled 34 Mt in 2025. The Mineral Reserves and Resources are summarized in Table 10 below.

#### **Boliden AB**



Table 10. Mineral Resources and Mineral Reserves Aitik 2025-12-31

Classification	2025					2024				
	kt 2025-12-31	Au (g/t)	Ag (g/t)	Cu (%)	Mo (g/t)	kt 2024-12-31	Au (g/t)	Ag (g/t)	Cu (%)	
<b>Mineral Reserves</b>										
Proved	173 000	0.10	1.5	0.21	24	175 000	0.09	1.4	0.20	
Probable	878 000	0.18	1.3	0.24	23	916 000	0.17	1.3	0.24	
<i>Total</i>	<i>1 051 000</i>	<i>0.16</i>	<i>1.4</i>	<i>0.24</i>	<i>23</i>	<i>1 091 000</i>	<i>0.16</i>	<i>1.3</i>	<i>0.23</i>	
<b>Mineral Resources</b>										
Measured	269 000	0.11	0.6	0.16	19	211 000	0.12	0.7	0.17	
Indicated	536 000	0.12	0.8	0.17	19	379 000	0.12	0.8	0.17	
<i>Total M&amp;I</i>	<i>805 000</i>	<i>0.12</i>	<i>0.7</i>	<i>0.17</i>	<i>19</i>	<i>590 000</i>	<i>0.12</i>	<i>0.7</i>	<i>0.17</i>	
Inferred	378 000	0.08	0.8	0.17	23	315 000	0.07	0.8	0.17	

### 3.14 Comparison with previous year

Aitik's total Mineral Reserve per 2025-12-31 (Table 11table 10), has decreased by 40 Mt from the previous year's estimate. In total, 39 Mt ore has been mined, from pushbacks N6, N7, S3 and Liikavaara. The 4.4 Mt reduction resulted from the variable cut-off. The addition of 4.2Mt that are now converted from Mineral Resource is the result of the latest pit design. (Table 11).

The combined Measured and Indicated Resource has increased by 214 Mt to 805 Mt, and the Inferred Resource increased by 63 Mt to 378 Mt. The combined Mineral Resources have increased by 31% to 1 182 Mt. An increase of 35 Mt is contributed to exploration drilling and the rest is due to increased metal prices even if an updated cost model mitigated the increase. (Table 12).

Table 11. Explanation of changes to Mineral Reserve from 2024-2025

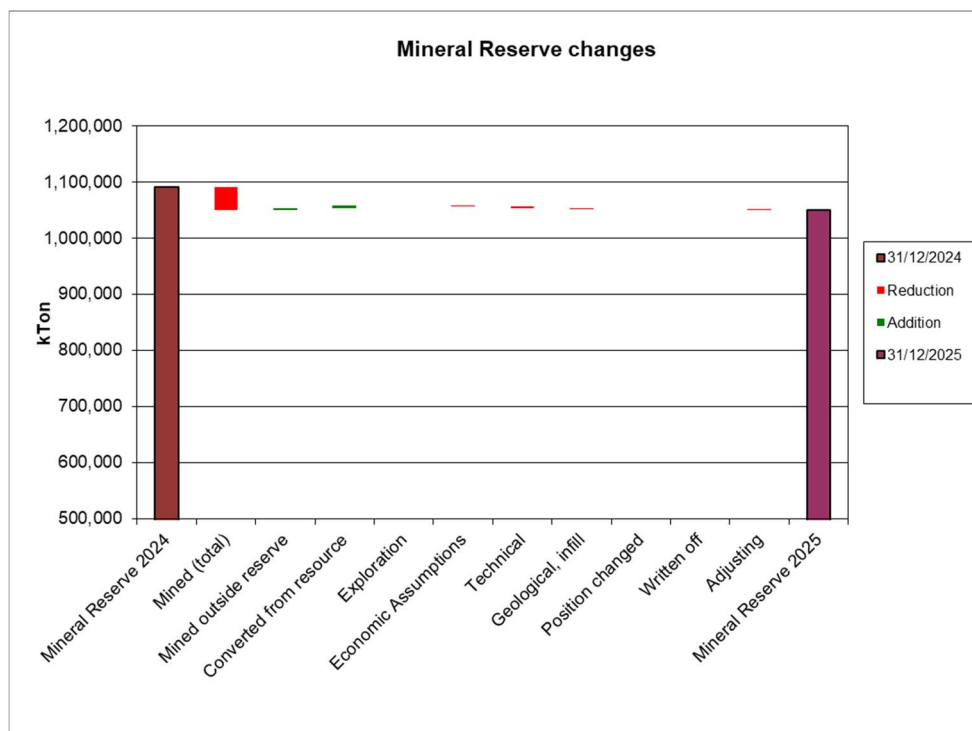
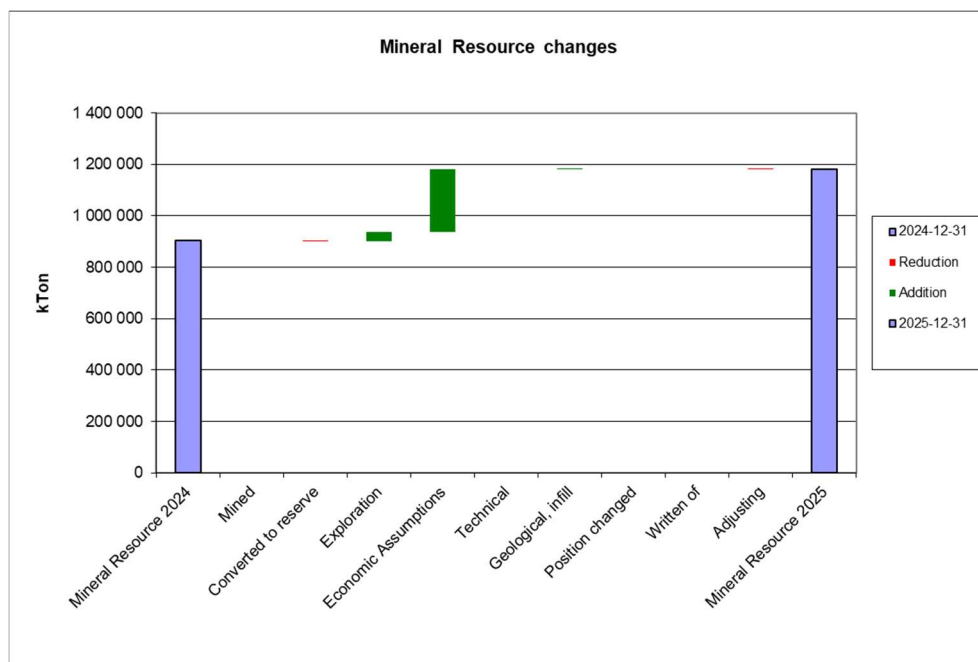


Table 12 Explanation of changes to Mineral Resource from 2024-2025



### 3.15 Reconciliation

To confirm the precision of the geological interpretation, modelling, grade interpolation etc., the block model grades are checked against the actual measured results from the processing plant. Reconciliation is carried out every month. For the annual summary report of Mineral Reserves and Mineral Resources the reconciliation is compiled from an aggregation of 12 months. Reconciliation over the period 2016-2025 is presented in Table 13.

**Table 13. Reconciliation figures over the last ten years for Aitik**

Reconciliation	2016	2017	2018	2019	2020	2021	2022	2023	2024	2025
kton concentrated Concentrator <sup>1</sup>	36,051	39,045	38,472	40,661	41,661	40,099	43,297	40,689	40,840	39,207
g/t Au Resource block model <sup>2</sup>	0.12	0.14	0.15	0.13	0.12	0.11	0.09	0.07	0.06	0.07
g/t Au Production block model <sup>3</sup>	0.12	0.14	0.14	0.13	0.12	0.11	0.09	0.07	0.06	0.07
g/t Au concentrator <sup>4</sup>	0.11	0.13	0.14	0.13	0.13	0.11	0.10	0.08	0.07	0.07
g/t Ag Resource block model <sup>2</sup>	2.0	2.1	1.8	1.2	1.0	0.9	0.9	0.9	0.9	1.0
g/t Ag Production block model <sup>3</sup>	2.0	2.1	1.7	1.2	1.0	0.9	0.9	0.9	0.9	1.0
g/t Ag concentrator <sup>4</sup>	2.1	1.9	1.8	1.2	1.1	0.9	0.9	0.8	0.8	0.7
%Cu Resource block model <sup>2</sup>	0.23	0.29	0.29	0.25	0.24	0.22	0.20	0.17	0.16	0.16
%Cu Production block model <sup>3</sup>	0.23	0.29	0.29	0.26	0.24	0.22	0.20	0.17	0.17	0.17
%Cu concentrator <sup>4</sup>	0.22	0.28	0.29	0.25	0.24	0.22	0.20	0.18	0.17	0.15
%S Resource block model <sup>2</sup>	1.5	1.4	1.2	0.9	0.8	0.6	0.7	0.6	0.8	0.6
%S Production block model <sup>3</sup>	1.5	1.4	1.1	0.9	0.8	0.6	0.7	0.6	0.8	0.6
%S concentrator <sup>4</sup>	1.4	1.2	1.1	1.0	1.0	0.8	0.7	0.7	0.7	0.5
<b>Notes:</b> <sup>1</sup> Official processed ore tonnage from the Aitik concentrator plant based on data from belt scales <sup>2</sup> Summation of modelled head grade from resource block model using polygons created from shovel scoop position and blast field material type boundaries. <sup>3</sup> Summation of modelled head grade from production block model using polygons created from shovel scoop position and blast field material type boundaries. <sup>4</sup> Official summation of head grade based on concentrator plant analyses.										

The realized/predicted values for Cu are consistent with recent years of production and indicate a high-level reliability to the block model for the elements (0.2%). Cu, Au and Ag grade deviations for 2025 are within an acceptable relative precision, however Cu recovery was slightly lower than historical in 2025. Cu Recovery was reduced due to weathered material in the first two benches of Liikavaara and the second phase of the S3 pushback. Recovery is expected to increase to historical averages in 2026 as mining progresses deeper.

For grade control, samples are taken from virtually all blast holes within the ore zone to update the production block model (BLPR). The grades of the mined-out ore are calculated from the production block model using the tonnage reported and surveyed monthly volumes of the pit. For long term planning and Mineral Resource estimation the planning/resource block model (BLPL) is used. During reconciliation the result from the plant is compared to both the BLPL and BLPR.

#### Boliden AB

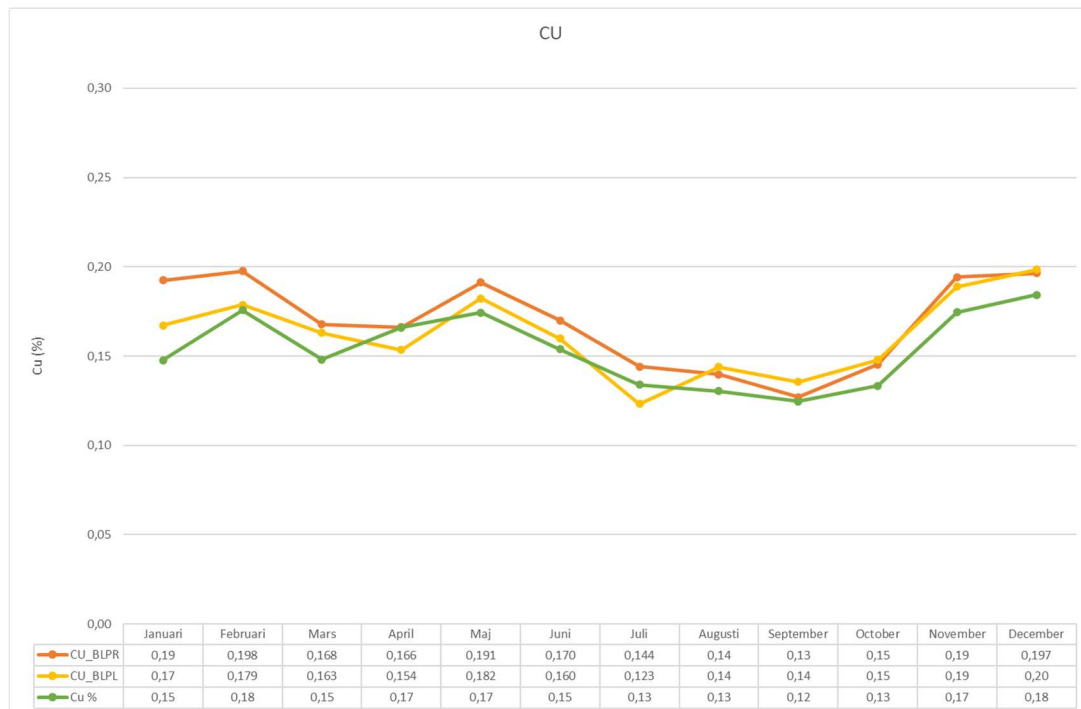


Figure 11: Comparing measured copper results from the processing plant with calculated results from the block models for copper.

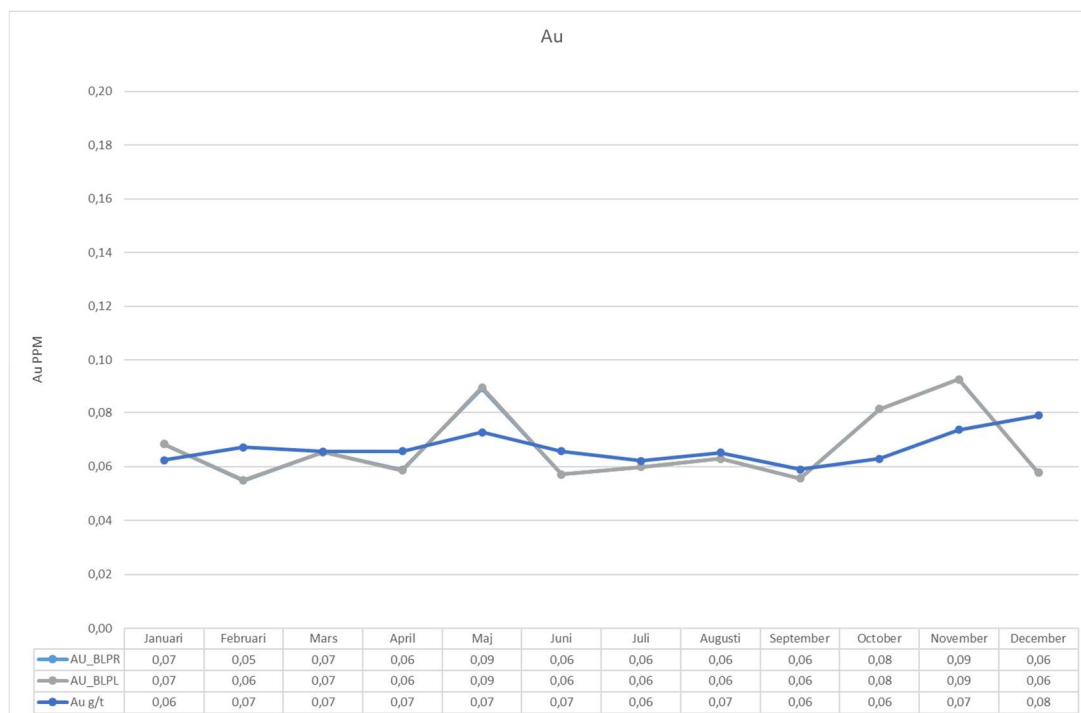


Figure 12: Comparing measured gold results from the processing plant with calculated results from the block models for gold.

### Boliden AB

## 4 References

Bergman, S., Kübler, L., and Martinsson, O., 2001, Description of regional geological and geophysical maps of northern Norrbotten County (east of the Caledonian orogen): Ba56, Uppsala, Sveriges geologiska undersökning, 110 p.

Martinsson, O., & Wanhainen, C. (2004). Character of the Cu-Au mineralization and related hydrothermal alteration along the Nautanen deformation zone, Gällivare area, Northern Sweden. *Society of Economic Geologists Guidebook Series, Volume 33*, 149-160.

Pan-European Standard for reporting of Exploration results, Mineral Resources and Mineral Reserves (The PERC Reporting standard 2021). [www.percstandard.eu](http://www.percstandard.eu)

Wanhainen, C. (2005). On the origin and evolution of the Palaeoproterozoic Aitik Cu-Au-Ag deposit, northern Sweden: a porphyry copper-gold ore, modified by multistage metamorphic-deformation, magmatic-hydrothermal, and IOCG-mineralizing events. *Luleå University of Technology, Doctoral Thesis*.